



WELCOME TO YEAR 7





HEADTEACHER:

MRS S GRAHAM

PUPIL PROGRESS LEADER:

MRS J STEPHENS

WEST DERBY SCHOOL SITE ADDRESS

**364 WEST DERBY ROAD
LIVERPOOL
L13 7HQ**

Tel No: 0151 235 1300

Website: www.westderbyschool.co.uk

**If you have any questions or problems, please do not hesitate to contact
the school in order to make an appointment.**

FOR SPECIFIC QUERIES REGARDING YOUR SON IN YEAR 7

PLEASE CONTACT MRS STEPHENS ON 0151 235 1300

What I will need on the First Day!

1. Make sure you get to school on time. (A copy of the school day timetable is in this booklet)



2. WEAR YOUR FULL SCHOOL UNIFORM:

BLACK BLAZER WITH SCHOOL BADGE WHITE SHIRT

SCHOOL TIE BLACK TROUSERS

PLAIN BLACK SHOES ONLY, NO MARKINGS

and if you want to wear a jumper

BLACK 'V' NECK SCHOOL JUMPER

**TRAINERS OR HOODED TOPS OF ANY KIND
ARE NOT ALLOWED IN SCHOOL**

3. BRING:
 - i) Pen, pencil, rubber, ruler, calculator
 - ii) Bus fare (if it is needed)
 - iii) A strong bag to carry school books in
 - iv) Dinner money if required

4. THE DAY

Arrive at school NO LATER than 8.45am.



You will go to your form room so you can get to know your form friends where you will have your timetable explained to you.

You will have a tour of the building and get to know your form tutor.

If you are the only boy from your school, there will be others in the same situation. Other boys will be feeling nervous too.

Your form tutor will make sure that you are not on your own.

Members of the same form always look after each other.

You are not on your own - you are part of a form team.

PROBLEMS - WHO CAN HELP??

▶ AT SCHOOL



You can talk to a friend, your Form Tutor, to any member of staff, or your Year 9 Peer Mentor. Peer Mentors are Year 9 pupils who are chosen by school to be trained to support new Year 7 pupils joining secondary school. This is done by supporting them to settle into secondary school, listening to worries and helping with practical problems like getting lost or using a timetable! Often peer mentors will have experienced some difficulties during their own transfer to secondary school so they can identify with the potential concerns and worries of new Year 7 pupils.

THEY WILL LISTEN

THEY WILL ADVISE

If you have a problem, do not keep it to yourself. We cannot help you if you do not tell us

▶ AT HOME

Your parents or carers can help you, so can other members of your family. Talk things over with them. Tell them about your day. They'll want to know!



BULLYING



We do not put up with bullies in West Derby

Bullying can be:

- Dirty Looks
- Racist Comments
- Calling Names
- Hitting or pushing
- Threats
- Deliberately leaving someone out and making them upset.
- Taking people's school equipment or books
- Nasty or upsetting text messages or comments on social network sites
- Cyber bullying - it does not have to be face to face
 - use of social media sites
 - gaming site Bullying

YOU MUST TELL SOMEONE - YOUR FORM TEACHER, A FRIEND OR ANY MEMBER OF STAFF.

WE CAN AND WILL HELP!





SCHOOL DAY



MONDAY

8.45 - 9.15	Reg/PSHCE
9.15 - 10.10	Period 1
10.10 - 10.25	BREAK
10.25 - 11.20	Period 2
11.20 - 12.15	Period 3
12.15 - 12.55	LUNCH
12.55 - 1.55	Period 4
1.55 - 2.55	Period 5

TUESDAY-FRIDAY

8.45 - 9.00	Registration
9.00 - 10.00	Period 1
10.00 - 10.15	BREAK
10.15 - 11.15	Period 2
11.15 - 12.15	Period 3
12.15 - 12.55	LUNCH
12.55 - 1.55	Period 4
1.55 - 2.55	Period 5



LUNCHTIME

You are not allowed out of school at lunchtime.

The dinner sittings are on a rota so all of you have the chance of being first in the queue. There is a choice of hot and cold food, or you may bring your own packed lunch. West Derby is a healthy school, try to make your packed lunch as healthy as possible.

UNIFORM



- You **MUST** wear your **FULL** school uniform
- You will need special uniform for P.E., Technology and Food Technology

Your parents have been given a uniform list.

REMEMBER:—

SHOES, NOT TRAINERS MUST BE WORN

HOODED TOPS OF ANY KIND ARE
BANNED.

A WRISTWATCH IS THE ONLY
JEWELLERY

HOMEWORK

You will be expected to do homework **EVERY NIGHT.**



All homework can be viewed via the school website through the 'Show My Homework' section. All pupils will have a unique log in.



Your parents will be asked to check your homework every night.

REMINDER: If you have problems with your homework, tell someone!



MOBILE PHONES



Mobile phones **MUST BE SWITCHED OFF** at all times except for break and lunchtime.

If you are found with your phone out during lessons or registration, or if it rings, it will be taken from you and placed in the school safe for twenty four hours. Our school policy is that your phone will be confiscated until the end of the next school day. **If it is confiscated on a Friday it will not be returned until the end of the school day on the Monday.**

Any phones taken from pupils **MUST** be collected from the school office by parents/carers.

Because we are concerned for your safety we 'spot check' our boys' phones. If we find any unsuitable images on any, we will keep the phones until a parent or carer can collect it. We have your safety in mind.

REMEMBER!

If you bring your mobile phone into school it is up to you to keep it safe. We **DO NOT** take responsibility if you lose your phone.

Physical Education

The PE department is a happy, successful and busy one. We are confident that you will be able to find success and satisfaction during your time with us. You will experience lots of different types of activities and have lots of opportunities to work individually and in small groups.

How is PE taught: -

You will be given one lesson of PE per week. Your PE teacher will let you know which subject is during your first week in West Derby School. Each activity being taught for approx... 6 weeks.

Activities covered: -

Autumn/Spring: - Health and Fitness, Gymnastics, Rugby, Football, Badminton, Table Tennis and Handball

Summer: - Cricket/Athletics/Tennis

Skills:-

- Understand the importance of health, fitness and exercise and learn how to prepare for different activities and to recover afterwards.
- Practise and perform a range of movement skills related to each sport.
- Learn basic rules and simple tactics for each sport.
- Begin to analyse your own and others' performances.

Homework/Assessment:-

- You will be expected to complete some homework in year 7, this is normally 4 times a year (November, January, April and June). Homework will be set through 'show my homework' on the school website. You will be assessed at the end of each term, to ensure you are making excellent progress in PE.

Here is a little checklist which will really help when you start your first week: -

- ✓ Please make sure you have the correct PE kit, this is important for safety, hygiene and to perform your best.
- ✓ If for any reason you cannot take part in your PE lesson e.g. injured or unwell, please make sure you have a note from your parents which explains the problem and when you can take part again. We will still expect for you to get changed into PE kit in order to play as active role as possible in the lesson e.g. official, coach etc.
- ✓ Remember to have a positive approach towards physical activity, an active body is always a happier and healthier one.
- ✓ Look out for and read and return our letter and permission slip relating to 'Extracurricular activities' this will be issued in September. We run a wide range of teams and sports clubs so it would be really good for you to be involved in as much as you can.

EXTRA CURRICULAR ACTIVITIES

Lots of extra activities are arranged for the West Derby boys:

For example:

Visits ~ to the theatre, museums, London and many other places of interest.

Pupils also take part in a variety of trips and experiences including activity holidays in places such as France, skiing in Austria and cultural visits to Spain and Poland.

There is an extensive programme of media enrichment activities as well as an ICT Club, AppleMac Club, Science Club and Film Club.

School Productions by the Drama Department.

Music Concerts performed by pupils with a musical interest from the Music Department.

Clubs are held both at lunchtime and after school and you will be given a list of what is on and where in September.

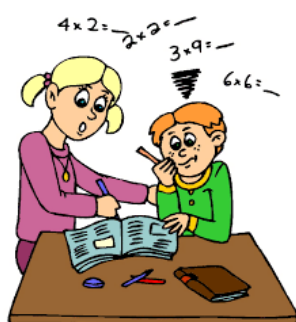
MATHEMATICS

All boys in Key Stage 3 have five periods of Mathematics a week. You will build on the work you have been doing at primary school.



You must bring a pen, a pencil and a ruler to every maths lesson.

Most homework will be set online on the MyMaths website. You may have already used MyMaths in your primary school



There are Maths Clubs, homework help and revision classes. Your Maths teacher will let you know when these are and where to go to take part.

Throughout the year, pupils at West Derby are given opportunities to take part in a variety of enrichment activities, including:

- Maths competitions
- Team Maths Challenges
- World Maths Day
- Numeracy Club - Fun Maths for Year 7
- University Lectures
- Masterclasses

If you have any questions or need any help at all, just speak to any member of the Maths Department. We want you to enjoy your time at West Derby and are always happy to help you.

ENGLISH

The English staff at West Derby work hard to ensure that your change from Primary School to Secondary School is as smooth as possible.

We include aspects of fun in the lessons wherever possible, including games, ICT, drawing etc. Sometimes you'll forget that it is actually an English lesson because you'll be enjoying yourself so much!

Lots of our lessons include acting and watching film clips, making interactive books and presentations. What you do in English lessons will help to support you in all of your other lessons across the school.

We will organise theatre trips and visiting writers and there are always local and national competitions running. Recent competitions have included mini sagas, super hero stories, performing poetry and raps. You could win individual prizes and prizes for the school but even if this doesn't happen you will have lots of fun taking part; your work might even be printed in a book for you to keep.

You might recognise some of the work you do from Primary School; this doesn't mean that your teacher thinks that you don't already know it. It just means that they don't ever want you to forget it; that helps you to make progress.

You'll have plenty of chances to read for enjoyment and you will become a member and receive an induction at the local library. You will be given a library card; there's a choice of Liverpool or Everton FC or neutral, if you're not a footy fan like me!

We really want you to enjoy reading and we don't just mean boring books, with no pictures. We are talking reading via iPads, reading comics, match reports, newspapers and celebrity autobiographies.

When your teacher picks books to read in class they will try and choose one that you'll really enjoy. We are likely to look at some of the classic reads in order to prepare you fully for the exciting new Curriculum which is set to begin during your time with us.

If you need a little extra help with your reading, that's nothing to worry about either; we can help you with that too. We'll even help you with your handwriting and we'll have you writing beautifully in no time.

If you are worried about anything at all then please speak to your teacher or drop into the department at lunch or after school; there is always someone available to help you.

SCIENCE



Hello and welcome to Science! You will probably be really excited about Science lessons in West Derby School and so you should be! Here is what you will be doing:

Biology	Chemistry	Physics
Cells	Particles and their behaviour	Forces
Structure and functions of body systems	Elements, atoms and compounds	Light
Reproduction	The Periodic table	Electricity and Magnetism
	Chemical Reactions	

Science lessons are really interesting and fun. You will be using Bunsen burners, looking at electromagnets, mixing chemicals, looking at cells using a microscope and lots more! You have to be very careful and sensible in Science Laboratories and we will explain this to you when you start in September.

Homework:

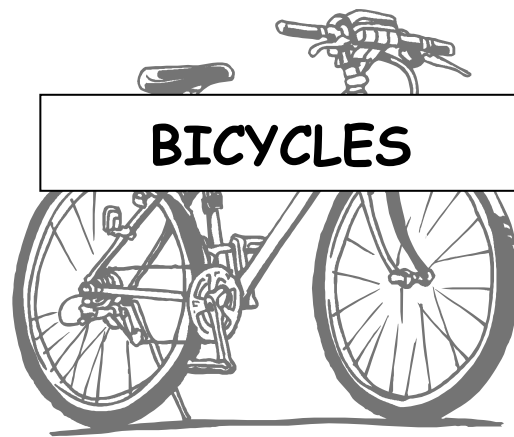
You will be given at least one piece of Science homework each week.

Lessons:

You will have 3 lessons of Science each week.

What you need to bring:

A pen, pencil, ruler and your planner..... and most importantly a positive attitude.



YOU CAN BRING YOUR BIKE TO SCHOOL, BUT -

YOU MUST HAVE:

- a) YOUR PARENT OR GUARDIAN'S PERMISSION
- b) A SECURE CHAIN AND LOCK
- c) A HELMET (PREFERABLE)



**WE HAVE DESIGNATED BIKE STORAGE
AREAS ON THE SCHOOL PREMISES THAT
YOUR SON CAN USE
PLEASE DO NOT LEAVE YOUR BIKE LOCKED
UP OUTSIDE OF THE SCHOOL BUILDING**

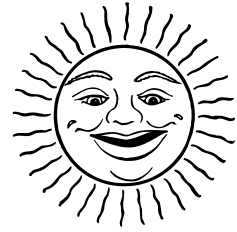
Boys will have an opportunity to take part in a 'Bikeright' Scheme, which is a Level 3 Proficiency Course. It teaches pupils how to safely manage cycling on the roads, junctions and roundabouts.

REMEMBER

The school cannot be held responsible for damage to, or theft of, your bicycle!!

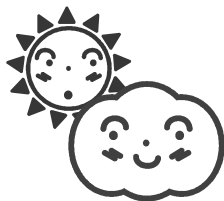
REMEMBER

THIS IS A NEW START FOR YOU



IT'S UP TO YOU NOW!

HOW SUCCESSFUL YOU ARE DEPENDS ON
YOU AND YOUR ATTITUDE.



DO YOUR BEST, BE POLITE AND
CONSIDERATE AND **SMILE!**

ENJOY YOUR HOLIDAY.



SEE YOU IN SEPTEMBER -

WE ARE LOOKING FORWARD TO SEEING YOU!